

Keyboard and Commands

I have been asked a couple of times recently, how to change the commands assigned to certain keys on the keyboard in **Smart Architect**. It's a fairly simple process that I thought might be helpful to other users.

Smart Architect has a number of aliases and short cut keys automatically assigned. For long term **drcauto** users, many of these will be second nature, but newer users may want to retain the standard AutoCAD settings with which they are familiar.

Here is a brief definition of a command alias and a keyboard shortcut, to illustrate the difference. A command alias is an abbreviation entered on the command line to invoke a command. The abbreviation needs to be followed by the use of the Enter button; eg, **L** followed by **Enter** will invoke the **Line** command.

A keyboard shortcut is a combination of keystrokes such as **V+End**, (**V key** followed by **End key**), to generate a South West isometric view. The Enter button is not required in combination with keyboard shortcuts.

The shortcut keys in **Smart Architect** are automatically activated when the program is installed. The most severe method of changing the functions behind keys, back to the original AutoCAD setting, would be to disable the **Smart Architect** keyboard. This can be done by going to the **Utilities menu -> Smart Architect Utilities -> drcauto Keyboard Off**. Turning off the **Smart Architect** keyboard will only disable the keyboard shortcuts, not the command aliases, but it will leave you without a number of very useful functions.

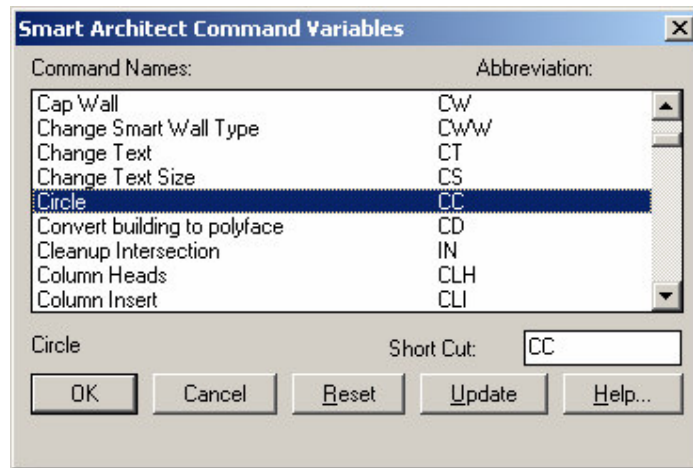
Command Aliases:

Once you have installed **Smart Architect** you will find a number of aliases are different from your standard AutoCAD. There is a long history behind the **drcauto** aliases, but here are some of the reasons we have introduced them. There is still no doubt that the keyboard entry of one or two keys to invoke commands is far quicker than picking from tool bars and menus, but some of the standard aliases in AutoCAD seem to indicate they were set up by someone who has done very little drafting. For example, the **Copy** command has to one of the most commonly used commands in day to day drawing, while drawing a circle is far less common. It is for this reason **Smart Architect** uses **C** for **Copy** (instead of **CP** or **CO**) and **CC** for **Circle**.

It is also far quicker to strike the same key twice, rather than two separate keys, to invoke commands such as **LL** for **Polyline** (instead of **PL**) and **RR** for **Rotate** (instead of **RO**).

The **Smart Architect** aliases will take precedence over the AutoCAD aliases defined in the **acad.pgp** file (**acft.pgp** – AutoCAD LT). A list of all the **Smart Architect** command aliases and shortcut keys is available in the **Level 1 Training Manual**. The manual can be viewed or downloaded for free from the Internet. <http://training.drcauto.com>

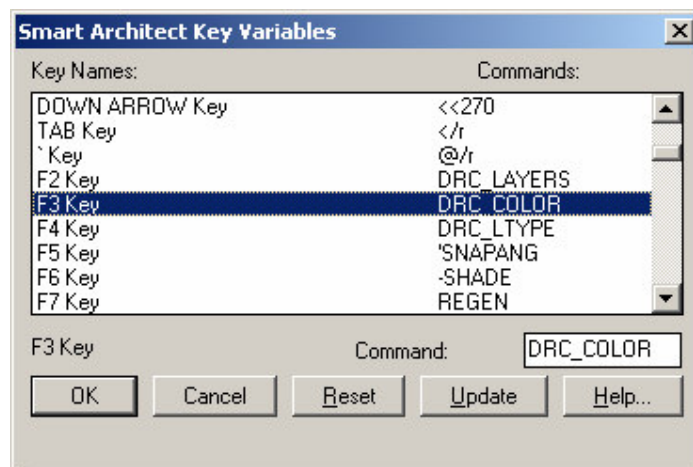
The **Smart Architect Command Variables** dialog box is used to alter existing aliases, this is accessed by going to the **Utilities menu -> Configure Smart Architect -> Commands**. To change an alias, simply locate it in the list and change the assigned Short Cut. Remember to hit the **Update** button to save your changes.



Keyboard Shortcuts:

Let's use an example here and change a **Smart Architect** shortcut key. The **F3** function key is programmed to change colours; we will set it back to the AutoCAD standard.

- Click on **Utilities menu** -> **Configure Smart Architect** -> **Keyboard**, this will open the **Smart Architect Key Variables** dialog box.
- Scroll down the list and click **F3 Key** under **Key Names**.
- Delete **DRC_COLOR** from the **Command** text field in the bottom left hand corner, leaving the field blank.
- Click on the **Update** button to save your changes.
- Click on **OK** to close the dialog box. The **F3** function key is now restored to the original AutoCAD setting.



Any one of the commands associated with a **Smart Architect** shortcut key can be replaced by a new command or left blank to restore the AutoCAD default.

For further Information on AutoCAD aliases, shortcuts or the *.pgp file, refer to the AutoCAD Help file.